

# Create NLS

By default, JAXFront uses the node names of the XML schema definition for the visualization of the schema nodes. JAXFront offers the following two options to adapt a GUI to a certain language:

- Input over the Type Editor dialog
- Input over the NLS Preview

## Input over the Type Editor dialog

You can define a translation for each XUI-Element, using the Editor area (see 3.2). Other elements, dependent on the respective element type (SimpleType, ListType, ComplexType, etc.), are available for the translation (see table below).

Name 1	ST	STL	SG	SG*	SGL	CG	CG*	CGL
Tree entry	x	x	x	x	x	x	x	x
Heading	x	x	x	x	x	x	x	x
Leaf name	x							
Choice elements				x			x	
Lineinfo		x			x			x
TableLayout			x			x		
Error message	x							
Help text	x	x	x	x	x	x	x	x

ST = SimpleType, STL = SimpleTypeList, SG = SimpleGroup, SG\* = SimpleGroup as Choice, SGL = SimpleGroupList, CG = ComplexGroup, CG\* = ComplexGroup as Choice, CGL = ComplexGroupList

A typical NLS entry is structured as follows:

- XPath%Context%detail=Translated Text

Examples:

```
purchaseOrder%caption=Purchase Order
/purchaseOrder%treeEntry=Purchase Order
/Product/price%label=Price
/USAddress/city%label=City
/USAddress/name%label=Name
/USAddress/state%label=State
/USAddress/street%label=Street
/USAddress/zip%label=ZIP
/purchaseOrder/@orderDate%label=Order Date
```

```
/purchaseOrder/item[list]%lineInfo%0=Part Num.
/purchaseOrder/item[list]%lineInfo%1=Quantity
/purchaseOrder/item[list]%lineInfo%2=Price
/purchaseOrder/item[list]%lineInfo%3=Total
/purchaseOrder/item[list]%lineInfo%4=Total
/purchaseOrder/item[list]%lineInfo%5=PRICE
```

Following context exists:

Context Name	Meaning
label	A simple form label.
caption	A simple caption for a composite group.
treeEntry	A tree entry name.
lineInfo%x	A column label for a table.
tableLayout%x,y	A name for a label cell within an own table layout containing x and y coordinates.

## Typical NLS dialog

The structure described above applies to tree entries, headings, leaf names and elements which can be used in a Table-Layout representation. In the following Figure, some typical NLS dialogues, which follow this schema, are specified.

NLS

☐ en

Tooltip

☐ en

NLS dialog in the Table Layout

Property	Value
Type	label
Formula	<input type="text"/> ...
Text	
Font Name	<input type="text"/>
Font Size	
Font Style	<input type="text"/>
Font Color	<input type="text"/> ...
X	2
Y	1
H.Align	fill
V.Align	center
Row Span	1
Col Span	1
NLS (en)	
NLS (Tooltip) (en)	

NLS input field for an error message (screenshot)

Text

☐ en

Root is: /purchaseOrder/@orderDate. Press CTRL+SPACE to get help (in node context start with '.' ...  
☒ Plain ☐ Formula

For a few elements, you cannot define a Tooltip text, and you need to use the special NLS dialogs. The elements without a Tooltip are:

- Elements within a selection list (Choice Type)
- Help texts
- Column/row names (LineInfos) of tables

The following figures provide an example of each element without a Tooltip:

NLS

☒ en

	text
leaf	
address	
another...	

NLS for selection lists

de	
fr	
it	
en	

#### NLS anchor points for Help text

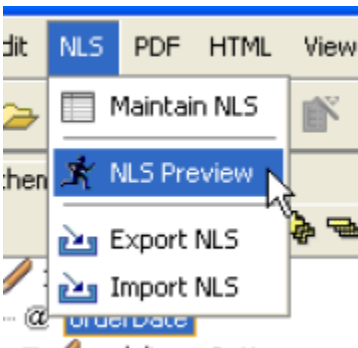
NLS

☐ en

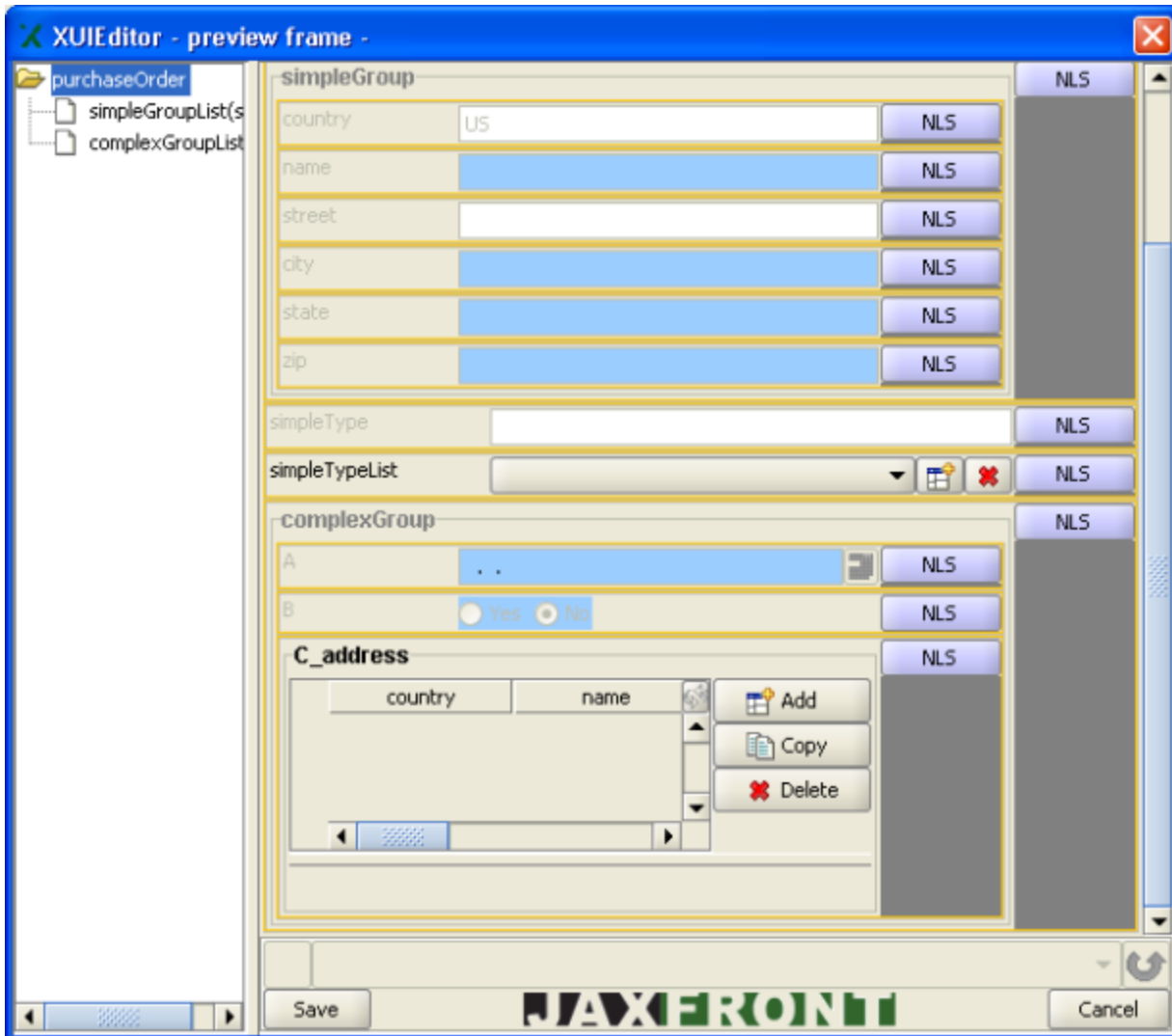
#### Input over the NLS Preview

In principle, the structure of the NLS texts is similar to the one described in the previous section (Input over the Type Editor dialog). The difference lies in the presentation of the NLS dialogs and their distributed appearance within the Editor area.

To start the NLS preview, select the *NLS preview option from the NLS menu*.



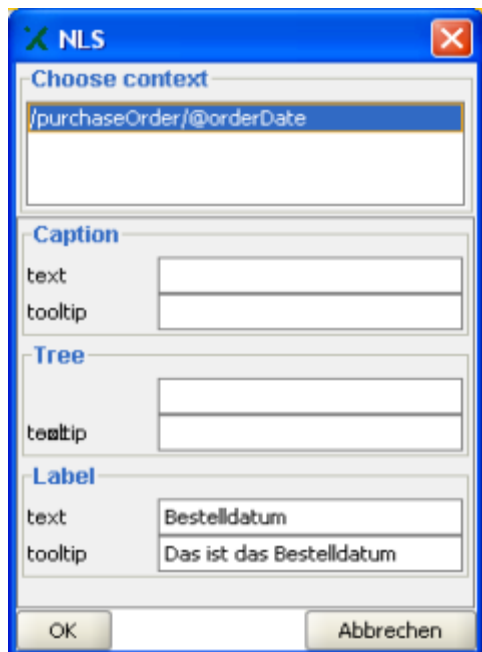
In this GUI, all the elements for which a translation is possible have a yellow border and an *NLS Button*.



### NLS Editor

If you click an NLS button, a corresponding *NLS dialogue* appears, depending on the element type.

These NLS dialogues offer all the elements for which a translation can be created in this context (see figure below). This differs from the previous method (Input over the Type Editor dialog).



**NLS**

Choose context  
/purchaseOrder/@orderDate

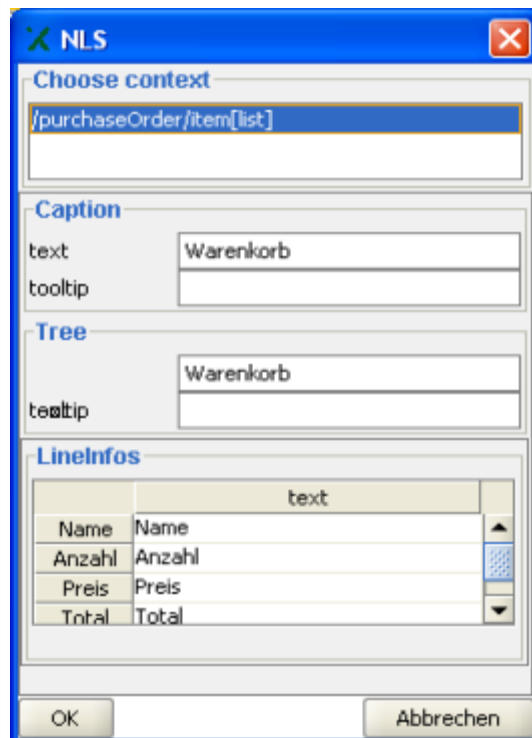
**Caption**  
text  
tooltip

**Tree**  
text  
tooltip

**Label**  
text: Bestelldatum  
tooltip: Das ist das Bestelldatum

OK Abbrechen

NLS-Preview-Dialog for SimpleTypes



**NLS**

Choose context  
/purchaseOrder/item[list]

**Caption**  
text: Warenkorb  
tooltip

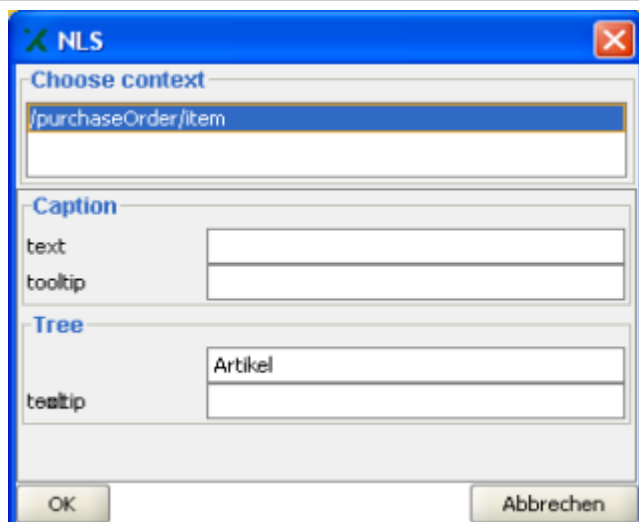
**Tree**  
text: Warenkorb  
tooltip

**LineInfos**

	text
Name	Name
Anzahl	Anzahl
Preis	Preis
Total	Total

OK Abbrechen

NLS-Preview-Dialog for ListTypes



**NLS**

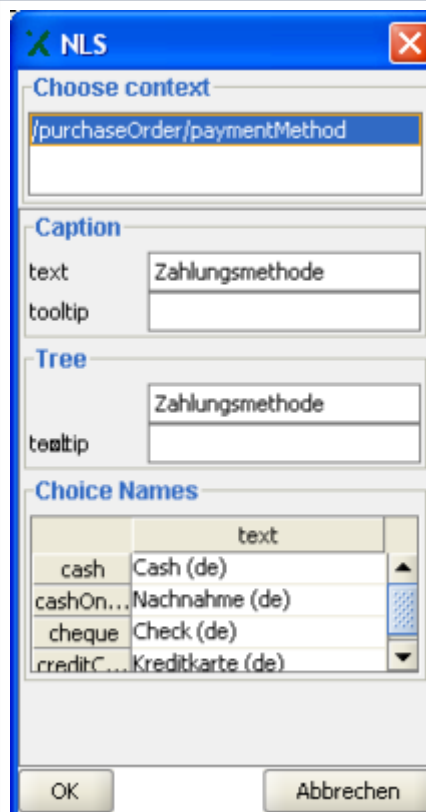
Choose context  
/purchaseOrder/item

**Caption**  
text  
tooltip

**Tree**  
text: Artikel  
tooltip

OK Abbrechen

NLS-Preview-Dialog for ComplexTypes



**NLS**

Choose context  
/purchaseOrder/paymentMethod

**Caption**  
text: Zahlungsmethode  
tooltip

**Tree**  
text: Zahlungsmethode  
tooltip

**Choice Names**

	text
cash	Cash (de)
cashOn...	Nachnahme (de)
cheque	Check (de)
creditC...	Kreditkarte (de)

OK Abbrechen

NLS-Preview-Dialog for Choices

### NLS within a TableLayout

The advantage of this preview is the proximity to the GUI in which it is used. You can quickly navigate between the individual translations. A translation can be made for elements that were not defined via Plugin or TableLayout (see the figure below).

^billTo			
Name	<input type="text"/>		
Street	<input type="text"/>		
Zip	<input type="text"/>	City	<input type="text"/>
State	<input type="text"/>	Country	<input type="text" value="US"/>